

PROMINENCE (Jan. 1998)

Date	Time	N		S		Total	Rem.
		U.	T.	E	W		
1		-	-	-	-	-	
2	4h25m	1	5	1	2	9	
3	2:24	1	5	1	0	7	
4		-	-	-	-	-	
5	3:31	2	1	0	3	6	
6		-	-	-	-	-	
7	3:25	1	5	1	3	10	
8		-	-	-	-	-	
9	3:55	1	4	0	2	7	
10		-	-	-	-	-	
11		-	-	-	-	-	
12		-	-	-	-	-	
13	3:33	0	5	5	1	11	
14		-	-	-	-	-	
15		-	-	-	-	-	
16	4:11	1	1	1	2	5	
17		-	-	-	-	-	
18		-	-	-	-	-	
19	4:02	4	1	0	1	6	*
20	2:18	4	3	0	2	9	
21	2:46	3	5	1	4	13	
22	3:08	5	2	1	3	11	
23		-	-	-	-	-	
24		-	-	-	-	-	
25	2:14	3	0	1	0	4	
26	4:52	1	0	1	1	3	
27	5:04	0	2	1	1	4	
28		-	-	-	-	-	
29	3:58	2	3	0	4	9	
30	2:36	1	3	0	1	5	
31	5:22	2	4	0	0	6	
Sum		32	49	14	30		
		81		44		125	
Mean		4.76		2.59		7.35	

Days 17 * - Contrast is bad

8cm Prominencescope
H-alpha (H.W 0.7A)

PRINCIPAL PROMINENCE(Jan. 1998)

Date	Time	Type	Latitude	Altitude
U. T.		1 - 6		(ten thousand Km)
2	4h25m	5	N38-49W	5.7
3	2:24	5	N37-56W	7.1
5	3:31	2	N26-28E	6.7
7	3:25	1	N49-57W	5.1
9	3:55	2	N35-38W	9.1
9	3:55	6	S35-39W	6.5
16	4:11	5	N43-50E	5.5

SOLAR FLARES (H-alpha Patrol, H.W 0.6A)

Date	Time U. T.	Max.	Helio. Position		Imp.	Group NO. and Type
			Latitude	Mer. Dist.		
26	3h51m - 4h03m	3h54m	N16-18	E42-48	1n	N6630 D
29	1:44 - 2:01	1:49	S32-35	W 4- 6	1n	S6412 F

PROMINENCE (Feb. 1998)

Date	Time	N		S		Total	Rem.
		E	W	E	W		
1		-	-	-	-	-	
2	2h51m	3	6	2	3	14	
3		-	-	-	-	-	
4	4:06	1	4	2	2	9	
5	1:47	2	2	2	2	8	
6	3:40	5	1	3	1	10	
7		-	-	-	-	-	
8		-	-	-	-	-	
9	4:43	0	1	0	1	2	
10		-	-	-	-	-	
11	1:18	2	4	6	3	15	
12		-	-	-	-	-	
13	3:57	1	3	1	3	8	
14		-	-	-	-	-	
15		-	-	-	-	-	
16	2:43	2	4	1	0	7	
17		-	-	-	-	-	
18	1:10	5	4	1	1	11	
19	1:33	2	1	3	3	9	
20		-	-	-	-	-	
21	6:53	5	3	2	1	11	
22	3:06	2	2	1	3	8	
23	0:20	1	1	3	5	10	
24		-	-	-	-	-	
25		-	-	-	-	-	
26		-	-	-	-	-	
27		-	-	-	-	-	
28		-	-	-	-	-	
Sum		31	36	27	28		
		67		55		122	
Mean		5.15		4.23		9.38	

Days 13

8cm Prominencescope
H-alpha (H.W 0.7A)

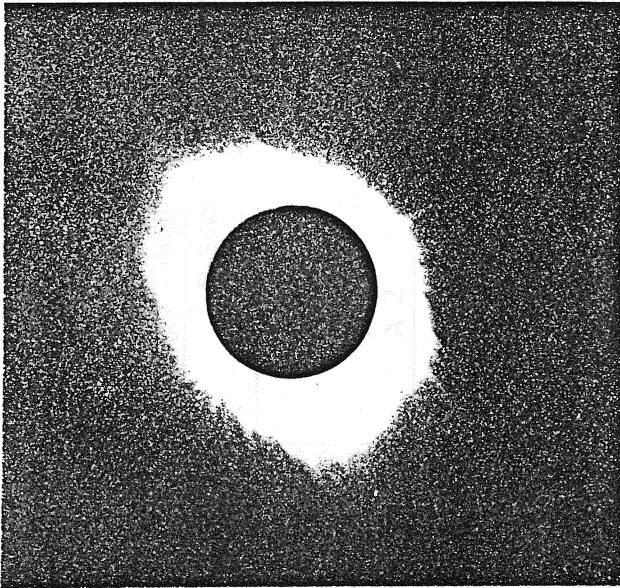
PRINCIPAL PROMINENCE (Feb. 1998)

Date	Time	Type	Latitude	Altitude
	U. T.	1 - 6		(ten thousand Km)
18	1h10m	2	N26-29E	5.6

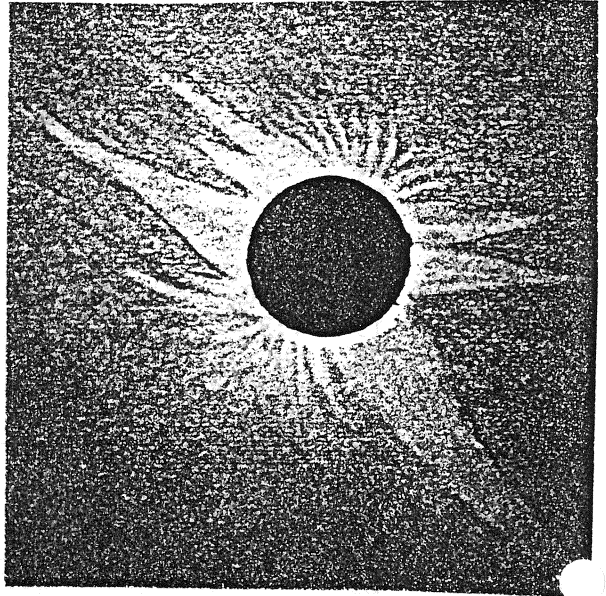
SOLAR FLARES (H-alpha Patrol, H.W 0.6A)

NONE OBSERVED

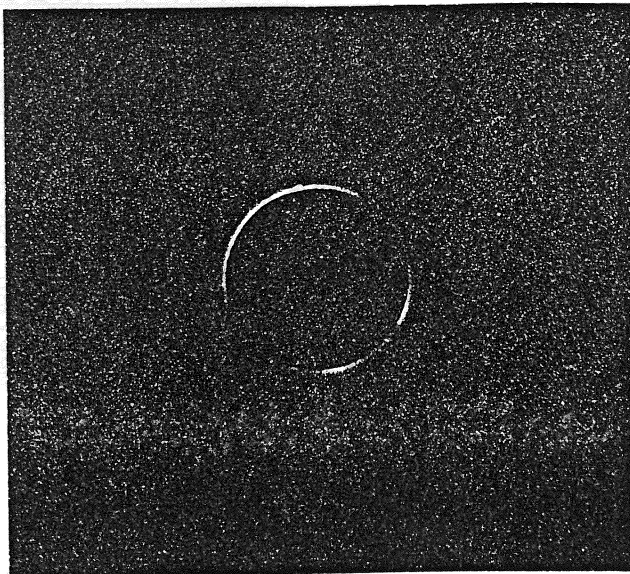
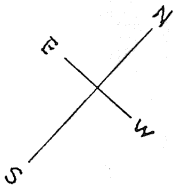
SOLAR ECLIPSE OBSERVED AT CARRASQUEOR IN VENEZUELA ON FEB.26,1998



18h03m58s(UT)



SKETCH



18h03m30s(UT)

PROMINENCE(Mar. 1998)

Date	Time	N		S		Total	Rem.
		U.	T.	E	W		
1				-	-	-	-
2	3h10m	1		4	3	1	9
3	1:47	1		2	4	2	9
4	4:00	1		2	5	2	10
5				-	-	-	-
6	3:43	0		4	2	1	7
7	5:31	2		3	1	2	8
8	3:48	5		3	1	1	10
9	2:11	6		3	2	5	16
10	2:01	2		5	2	4	13
11	3:06	0		2	1	3	6
12				-	-	-	-
13				-	-	-	-
14				-	-	-	-
15				-	-	-	-
16	4:29	4		3	0	0	7
17	1:17	3		5	1	0	9
18	2:38	1		4	2	2	9
19	1:50	1		3	2	4	10
20				-	-	-	-
21	3:44	3		5	3	2	13
22	3:48	2		4	3	1	10
23	2:05	3		2	3	4	12
24	3:36	2		2	3	3	10
25	3:54	1		3	3	1	8
26				-	-	-	-
27				-	-	-	-
28				-	-	-	-
29	2:45	2		2	3	3	10
30	3:33	3		1	1	1	6
31	2:38	2		2	1	0	5
Sum		45	64	46	42		
		109		88		197	
Mean		5.19		4.19		9.38	
		10.10		8.38		18.48	

Days 21

8cm Prominencescope
H-alpha (H.W 0.7A)

PRINCIPAL PROMINENCE(Mar. 1998)

Date	Time	Type	Latitude	Altitude
	U. T.	1 - 6		(ten thousand Km)
8	3h48m	2	N55-57W	7.2
9	2:11	2	N58-60W	9.3
16	4:29	5	N32-35E	6.3
18	2:38	4	N23-24E	5.0
19	1:50	6	S29-32W	6.5
22	3:48	5	N55-61W	5.6
24	3:36	2	S10-12W	5.5
31	2:38	5	N46-52E	5.0

SOLAR FLARES (H-alpha Patrol, H.W 0.6A)

Date	Time U. T.	Max.	Helio. Position		Imp.	Group NO. and Type
			Latitude	Mer. Dist.		
3	3h07m - 3h11m	3h09m	S23-24	W38-39	Sn	S6423 E
3	7:19 - 7:25	7:22	S22-24	W37-40	1b	S6423 E
4	7:15 - 7:20	7:17	S24-25	W46-49	1n	S6423 E
16	1:04 - 1:10	1:06	S21-23	W46-48	1n	S6429 E
30	23:48 - 24:00	23:51	S25-26	W48-45	1b	S6433 C

PROMINENCE (Apr. 1998)

Date	Time	N		S		Total	Rem.
		E	W	E	W		
1		-	-	-	-	-	
2		-	-	-	-	-	
3	3h29m	4	2	2	2	10	
4	1:52	6	6	4	4	20	
5	2:25	2	4	5	5	16	
6		-	-	-	-	-	
7	4:54	3	1	3	5	12	
8		-	-	-	-	-	
9		-	-	-	-	-	
10	1:05	2	2	3	3	10	
11	4:21	2	2	4	4	12	
12	1:37	3	0	0	5	8	
13		-	-	-	-	-	
14		-	-	-	-	-	
15	6:25	3	4	1	2	10	
16	3:36	1	2	2	2	7	
17		-	-	-	-	-	
18		-	-	-	-	-	
19	3:20	0	2	5	3	10	
20		-	-	-	-	-	
21		-	-	-	-	-	
22	4:12	2	1	3	2	8	
23		-	-	-	-	-	
24		-	-	-	-	-	
25		-	-	-	-	-	
26		-	-	-	-	-	
27		-	-	-	-	-	
28	1:56	2	3	3	5	13	
29	3:26	3	2	4	2	11	
30	4:24	4	1	5	0	10	
Sum		37	32	44	44		
		69		88		157	
		9.14		14.57		23.71	
Mean		4.93		6.29		11.21	

Days 14

8cm Prominencescope
H-alpha (H.W 0.7A)

PRINCIPAL PROMINENCE (Apr. 1998)

Date	Time	Type	Latitude	Altitude
	U. T.	1 - 6		(ten thousand Km)
7	4h54m	6	N52-53W	9.4
10	1:05	5	S47-51W	5.4
10	1:05	5	S38-44W	5.8
19	3:20	6	S46-55W	6.5
28	1:56	5	N29-34W	6.4

SOLAR FLARES (H-alpha Patrol, H.W 0.6A)

Date	Time U. T.	Max.	Helio. Position		Imp.	Group NO. and Type
			Latitude	Met. Dist.		
3	23h39m - 24h08m	23h47m	S21-23	E 5- 9	1n	S6440 F
16	1:07 - 1:20	1:10	N19-20	W26-30	1n	N6645 D

PROMINENCE (May 1998)

Date	Time	N		S		Total	Rem.
		U.	T.	E	W		
1	3h21m	5	1	2	2	10	
2		-	-	-	-	-	
3	6:24	2	3	4	4	13	
4	2:57	2	0	6	3	11	
5		-	-	-	-	-	
6	4:13	2	3	2	1	8	
7		-	-	-	-	-	
8		-	-	-	-	-	
9	1:39	4	5	5	3	17	
10		-	-	-	-	-	
11		-	-	-	-	-	
12		-	-	-	-	-	
13	4:41	3	3	0	3	9	
14	7:07	0	2	2	1	5	
15		-	-	-	-	-	
16		-	-	-	-	-	
17	4:07	0	2	2	1	5	
18		-	-	-	-	-	
19	2:06	1	2	1	4	8	
20	3:55	2	4	2	1	9	
21	2:59	1	4	6	4	15	
22	3:30	4	1	6	6	17	
23	4:06	4	1	3	6	14	
24		-	-	-	-	-	
25		-	-	-	-	-	
26		-	-	-	-	-	
27	2:18	2	5	3	5	15	
28		-	-	-	-	-	
29		-	-	-	-	-	
30		-	-	-	-	-	
31	2:05	4	2	1	1	8	
Sum		41	42	43	46		
		83		89		172	
Mean		14.13		16.53		30.67	
		5.53		5.93		11.47	

Days 15

8cm Prominencescope
H-alpha (H.W 0.7A)

PRINCIPAL PROMINENCE (May 1998)

Date	Time U. T.	Type 1 - 6	Latitude	Altitude (ten thousand Km)
1	3h21m	5	N22-25E	5.6
13	4:41	5	N30-42E	6.3
14	7:02	5	N48-51E	5.0
17	4:07	2	S45-47E	6.4
19	2:06	5	S46-56E	6.7
19	2:06	5	S55-60W	5.5
20	3:55	5	S52-57E	6.7
20	3:55	5	S44-60W	6.0
21	2:59	2	N36-38W	7.9
21	2:59	5	S47-56W	6.5
21	2:59	4	S55-56E	5.8
22	3:30	2	S57-59E	5.4
22	3:30	5	S53-58W	6.5
27	2:18	6	S19-21W	7.5
31	2:05	2	N55-57E	5.8
31	2:05	2	S45-53W	13.2

SOLAR FLARES (H-alpha Patrol, H.W 0.6A)

Date	Time U. T.	Max.	Helio. Position		Imp.	Group NO. and Type
			Latitude	Mer. Dist.		
5	23h25m - 23h52m	23h35m	S12-15	W59-62	1b	S6454 H
5	23:33 - 25:00	23:47	S17-21	W58-67	1b	S6454 H
6	0:34 - 0:39	0:35	N25-26	W26-27	Sn	N6648 F
15	2:18 - 2:30	2:21	S18-22	W37-43	1n	S6459 E
27	6:01 - 6:19	6:05	S23-24	W75-76	Sn	S6463 C

PROMINENCE (Jun. 1998)

Date	Time	N		S		Total	Rem.
		E	W	E	W		
1	2h10m	6	1	3	2	12	
2		-	-	-	-	-	
3	8:23	3	2	6	3	14	
4	1:54	2	1	7	2	12	
5		-	-	-	-	-	
6	3:05	2	3	5	2	12	
7	3:40	3	4	2	4	13	
8	3:32	4	4	3	0	11	
9		-	-	-	-	-	
10		-	-	-	-	-	
11	5:52	3	3	1	0	7	
12	3:20	1	2	3	4	10	
13		-	-	-	-	-	
14		-	-	-	-	-	
15		-	-	-	-	-	
16		-	-	-	-	-	
17	2:34	0	7	3	0	10	
18	3:06	2	5	2	3	12	
19		-	-	-	-	-	
20	1:49	2	4	2	1	9	
21		-	-	-	-	-	
22		-	-	-	-	-	
23		-	-	-	-	-	
24		-	-	-	-	-	
25	6:16	3	3	2	4	12	
26		-	-	-	-	-	
27		-	-	-	-	-	
28		-	-	-	-	-	
29	2:06	2	0	2	4	8	
30	2:32	5	0	2	3	10	
Sum		38	39	43	32		
			77		75	152	
Mean			12.00		18.07	30.07	
			5.50		5.36	10.86	

Days 14

8cm Prominencescope
H-alpha(H.W 0.7A)

PRINCIPAL PROMINENCE (Jun. 1998)

Date	Time	Type	Latitude	Altitude
	U. T.	1 - 6		(ten thousand Km)
1	2h10m	2	N57-60E	6.4
1	2:10	2	S44-52W	12.1
3	8:23	2	N54-56E	9.3
3	8:23	6	S40-43E	8.0
4	1:54	2	N55-58E	12.0
6	3:05	5	S55-60E	5.6
6	3:05	2	S39-42W	7.4
7	3:40	5	S46-59E	6.4
8	3:32	5	S47-59E	6.5
11	5:52	5	S50-62E	6.4
12	3:20	6	S 7-10W	7.5
30	2:32	2	N21-26E	5.4

SOLAR FLARES (H-alpha Patrol, H.W 0.6A)

Date	Time U. T.	Max.	Helio. Position		Imp.	Group NO. and Type
			Latitude	Mer. Dist.		
12	2h43m - 2h55m	2h52m	S22-24	W70-73	1b	S6471 E
29	22:17 - 23:35	22:50	S19-22	E16-22	1b	S6480 A
29	23:15 - 23:22	23:17	S 14	E 20	Sn	S6481 J
30	1:28 - 2:38	1:51	N15-19	W10-21	2b	N6667 C

PROMINENCE (Jul. 1998)

Date	Time	N		S		Total	Rem.
		E	W	E	W		
1		-	-	-	-	-	
2	4h17m	3	1	2	1	7	
3	2:57	2	3	4	2	11	
4	3:06	1	1	3	4	9	
5	2:18	2	1	2	2	7	
6		-	-	-	-	-	
7	1:53	1	4	2	2	9	
8	4:04	1	2	2	1	6	
9	3:54	4	2	1	2	9	
10		-	-	-	-	-	
11		-	-	-	-	-	
12	0:59	1	3	2	5	11	
13	2:51	1	4	3	5	13	
14	3:35	0	5	5	2	12	
15	3:31	0	3	3	2	8	
16		-	-	-	-	-	
17	3:42	0	3	2	3	8	
18	2:11	1	3	2	6	12	
19	4:26	2	5	6	5	18	
20		-	-	-	-	-	
21		-	-	-	-	-	
22	1:40	3	5	1	6	15	
23	1:48	2	2	4	3	11	
24		-	-	-	-	-	
25	1:54	1	5	2	2	10	
26		-	-	-	-	-	
27		-	-	-	-	-	
28		-	-	-	-	-	
29	3:53	5	1	1	3	10	*
30		-	-	-	-	-	
31	2:07	2	1	5	5	13	
Sum		32	54	52	61	199	
		86	113				
Mean		4.53	5.95	11.26	15.95	27.21	

Days 19 * - Contrast is bad

8cm Prominencescope
H-alpha(H.W 0.7A)

PRINCIPAL PROMINENCE (Jul. 1998)

Date	Time U. T.	Type 1 - 6	Latitude	Altitude (ten thousand Km)
3	2h57m	5	S44-53E	6.5
4	3:06	5	S46-52E	8.4
5	2:18	5	S46-49E	6.5
9	3:54	5	N39-42E	5.1
9	3:54	5	N44-53E	5.6
12	0:59	5	S41-47E	6.4
13	2:51	2	S41-45E	8.4
14	3:35	5	N52-58W	5.0
14	3:35	2	S42-45E	9.0
15	3:31	2	S47-51E	6.5
17	3:42	5	S45-50W	5.6
19	4:26	2	S36-38W	5.6
29	3:53	5	S47-52E	5.6

SOLAR FLARES (H-alpha Patrol, H.W 0.6A)

Date	Time U. T.	Max.	Helio. Position		Imp.	Group NO. and Type
			Latitude	Mer. Dist.		
2	1h12m - 1h31m	1h23m	N15-17	W39-45	1b	N6667 C
3	0:33 - 2:35	1:10	S21-25	W15-25	2b	S6480 C
4	5:40 - 6:02	5:42	S22-24	W35-39	1b	S6480 D
25	4:22 - 4:42	4:24	N23-26	E28-35	1n	N6680 C

PROMINENCE (Aug. 1998)

Date	Time	N		S		Total	Rem.
		U.	T.	E	W		
1		-	-	-	-	-	-
2		-	-	-	-	-	-
3	4h12m	0	2	3	6	11	
4	1:44	4	7	2	6	19	
5		-	-	-	-	-	-
6		-	-	-	-	-	-
7		-	-	-	-	-	-
8	4:33	4	2	5	2	13	
9	2:41	3	4	3	2	12	
10	4:09	1	4	3	1	9	
11		-	-	-	-	-	-
12		-	-	-	-	-	-
13		-	-	-	-	-	-
14	3:08	1	2	6	2	11	
15		-	-	-	-	-	-
16		-	-	-	-	-	-
17		-	-	-	-	-	-
18		-	-	-	-	-	-
19	5:22	2	2	4	4	12	
20	3:04	2	1	5	2	10	
21	2:00	4	5	1	3	13	
22	3:21	3	2	0	4	9	
23	3:21	5	4	2	6	17	
24	1:37	4	5	3	7	19	
25	1:04	3	6	4	3	16	
26	4:32	4	3	1	3	11	
27		-	-	-	-	-	-
28	1:15	5	3	2	4	14	
29		-	-	-	-	-	-
30		-	-	-	-	-	-
31		-	-	-	-	-	-
Sum		45	52	44	55		
		97		99		196	
Mean		11.73		14.40		26.13	
		6.47		6.60		13.07	

Days 15

8cm Prominencescope
H-alpha (H.W 0.7A)

PRINCIPAL PROMINENCE (Aug. 1998)

Date	Time	Type	Latitude	Altitude
	U. T.	1 - 6		(ten thousand Km)
3	4h12m	2	S50-53E	7.4
8	4:33	5	N40-44E	5.0
8	4:33	2	S35-38E	5.0
8	4:33	2	S41-45W	13.0
9	2:41	6	S36-46W	13.6
19	5:22	3	N 27 E	7.0
19	5:22	3	N29-31E	8.4
23	3:21	5	S32-36W	5.6
24	1:37	4	N 8- 9E	6.1
24	1:37	5	S40-45E	6.5
24	1:37	2	S19-21W	5.2
25	1:04	2	S41-44E	6.8
25	1:04m	2	S32-35W	5.0
26	4:32	5	S46-53E	7.6
26	4:32	5	S46-50W	5.0
28	1:15	6	N 8 E	7.6

SOLAR FLARES (H-alpha Patrol, H.W 0.6A)

Date	Time U. T.	Max.	Helio. Position		Imp.	Group NO. and Type
			Latitude	Mer. Dist.		
8	3h15m - 3h19m	3h17m	N13-14	E73-79	1n	N6694 H
9	5:17 - 5:31	5:19	N13-14	E59-64	1f	N6694 D
14	8:25 - 8:40	8:29	S24-26	W65-70	1b	S6498 B
18	22:22 - 22:37	22:30	N28-30	E82-85	1b	N6700 H
22	(0:06)- 0:50	0:08	N29-33	E45-50	1b	N6700 D
24	(22:36)- 25:45	22:39	N25-34	E 1-11	2b	N6700 D

PROMINENCE(Sep. 1998)

Date	Time	N		S		Total	Rem.	
		U.	T.	E	W			E
1	3h51m	2	0	7	4	13		
2	3:31	3	3	5	3	14		
3	3:19	3	7	2	2	14		
4	6:31	1	3	2	3	9		
5	3:56	1	5	2	2	10		
6		-	-	-	-	-		
7		-	-	-	-	-		
8	2:32	2	2	1	3	8		
9	4:12	1	2	1	3	7		
10	2:54	1	5	1	1	8		
11	5:46	1	3	3	2	9		
12	4:24	1	1	1	3	6		
13	6:05	4	1	2	5	12		
14	3:00	4	4	3	3	14		
15		-	-	-	-	-		
16	3:40	4	3	6	3	16		
17		-	-	-	-	-		
18	1:42	3	1	3	2	9		
19	1:24	2	5	2	2	11		
20	4:05	2	2	1	2	7		
21		-	-	-	-	-		
22		-	-	-	-	-		
23		-	-	-	-	-		
24		-	-	-	-	-		
25		-	-	-	-	-		
26		-	-	-	-	-		
27		-	-	-	-	-		
28		-	-	-	-	-		
29		-	-	-	-	-		
30		-	-	-	-	-		
Sum		35	47	42	43	82	85	167
Mean		5.13	5.31	5.31	5.31	10.44	10.44	10.44

Days 16

8cm Prominencescope
H-alpha(H.W 0.7A)

PRINCIPAL PROMINENCE(Sep. 1998)

Date	Time	Type	Latitude	Altitude
	U. T.	1 - 6		(ten thousand Km)
1	3h51m	4	N 1- 2E	5.9
2	3:31	5	S50-53E	5.4
8	2:32	2	N44-47E	6.0
9	4:12	5	N51-61W	5.4
11	5:46	2	S17-26E	11.6
16	3:40	5	S47-53E	5.1
19	1:24	4	N47-48W	6.4

SOLAR FLARES (H-alpha Patrol, H.W. 0.6A)

Date	Time(UT)		Max.	Helio. Position		Imp.	Group NO. and Type
	Beg.	End.		Latitude	Mer. Dist.		
4	23h26m	23h38m	23h30m	N20-21	E65-70	1n	N6709 C
9	(4:58)	- 5:08	4:59	S20-22	W77-72	1b	S6509 E
14	0:57	- 1:01	0:58	S 16	W 49	Sn	S6511 J
20	2:37	- 3:28	2:43	N14-23	E57-65	2b	N6717 H
23	0:30	- 0:50	0:34	S18-20	E15-20	1n	S6521 D

PROMINENCE (Oct. 1998)

Date	Time	N		S		Total	Rem.
		U.	T.	E	W		
1		-	-	-	-	-	-
2	1h21m	3	3	1	2	9	
3	3:08	6	3	2	1	12	
4	4:05	3	3	7	2	15	
5		-	-	-	-	-	
6		-	-	-	-	-	
7		-	-	-	-	-	
8		-	-	-	-	-	
9		-	-	-	-	-	
10		-	-	-	-	-	
11	4:06	2	3	5	3	13	
12		-	-	-	-	-	
13		-	-	-	-	-	
14		-	-	-	-	-	
15		-	-	-	-	-	
16		-	-	-	-	-	
17		-	-	-	-	-	
18	2:20	4	2	2	6	14	
19	2:27	2	4	2	1	9	
20		-	-	-	-	-	
21		-	-	-	-	-	
22	3:27	0	6	2	0	8	
23		-	-	-	-	-	
24	5:45	2	6	2	3	13	
25	0:36	2	2	4	3	11	
26		-	-	-	-	-	
27	2:49	4	2	4	1	11	
28	2:01	2	2	2	2	8	
29	4:20	3	3	3	3	12	
30		-	-	-	-	-	
31	2:11	5	2	2	3	12	
Sum		38	41	38	30		
			79		68	147	
Mean			16.38		13.38	29.77	
			6.08		5.23	11.31	

Days 13

8cm Prominencescope
H-alpha (H.W 0.7A)

PRINCIPAL PROMINENCE (Oct. 1998)

Date	Time U. T.	Type 1 - 6	Latitude	Altitude (ten thousand Km)
4	4h05m	5	N33-38W	5.0
4	4:05	5	N23-31W	5.0
19	2:27	6	N20-21W	8.4
27	2:49	2	N31-33E	6.6
27	2:49	5	S20-27E	5.7
27	2:49	5	S45-58W	5.1
28	2:01	2	N36-38E	5.6
28	2:01	6	N40-43W	6.5
28	2:01	5	S47-57W	5.0
29	4:20	6	N33-42W	6.3
31	2:11	2	N55-61E	8.3
31	2:11	2	S13-16W	5.5

SOLAR FLARES (H-alpha Patrol, H.W 0.6A)

Date	Time(UT)		Max.	Helio. Position		Imp.	Group NO. and Type
	Beg.	End.		Latitude	Mer. Dist.		
28	2h08m	2h47m	2h21m	N20-23	E37-42	1n	N6735 B

PROMINENCE (Nov. 1998)

Date	Time	N		S		Total	Rem.
		E	W	E	W		
1	4h13m	3	3	2	3	11	
2		-	-	-	-	-	
3	2:44	1	4	4	4	13	
4	3:37	1	3	4	4	12	
5	2:58	4	6	2	1	13	
6	2:32	8	5	2	4	19	
7		-	-	-	-	-	
8	1:01	0	1	3	5	9	
9	5:02	0	3	4	4	11	
10	3:07	0	4	2	7	13	
11	3:29	1	6	1	3	11	
12	2:12	1	6	1	4	12	
13	2:16	2	4	3	3	12	
14	2:36	3	6	8	4	21	
15	2:36	3	5	4	2	14	
16		-	-	-	-	-	
17		-	-	-	-	-	
18	3:24	4	3	4	1	12	
19	4:39	2	9	4	0	15	
20	3:30	3	7	3	1	14	
21		-	-	-	-	-	
22		-	-	-	-	-	
23	2:54	2	0	1	3	6	
24	2:31	3	0	2	3	8	
25	2:50	3	2	2	2	9	
26	2:01	4	1	1	4	10	
27		-	-	-	-	-	
28	2:02	5	3	4	3	15	
29	2:30	2	6	2	4	14	
30		-	-	-	-	-	
Sum		55	87	63	69		
		142		132		274	
			14.95	11.41		26.36	
Mean			6.45	6.00		12.45	

Days 22

8cm Prominencescope
H-alpha (H.W 0.7A)

PRINCIPAL PROMINENCE (Nov. 1998)

Date	Time U. T.	Type 1 - 6	Latitude	Altitude (ten thousand Km)
1	4h13m	2	N52-56E	11.1
3	2:44	2	N48-55E	11.3
3	2:44	5	N50-54W	5.6
3	2:44	2	S39-41W	5.5
4	3:37	2	N48-55E	10.6
4	3:37	2	S47-49W	5.2
4	3:37	2	S40-43W	5.5
4	3:37	2	S21-24W	6.5
5	2:58	5	N47-54E	8.5
5	2:58	6	S16-23W	6.7
6	2:32	5	N52-57E	7.5
6	2:32	5	S16-20W	5.7
11	2:29	2	N12-15E	5.9
12	2:12	6	N10-12E	5.1
15	2:36	2	N23-26E	6.6
19	4:39	5	N 1- 4W	5.6
20	3:30	6	N 8-26W	8.7
23	2:54	4	S24-25W	6.9
26	2:01	4	S 9 W	5.0
28	2:02	5	S57-61E	5.1
29	2:30	5	S55-60E	5.8

SOLAR FLARES (H-alpha Patrol, H.W 0.6A)

Date	Time(UT)		Max.	Helio. Position		Imp.	Group NO. and Type
	Beg.	End.		Latitude	Mer. Dist.		
1	2h44m	- 3h10m	2h49m	N20-22	E53-58	1f	----
4	3:14	- 3:50	3:23	N16-21	W 2-E5	1n	N6736 C
5	1:23	- 1:29	1:25	N15-17	W12-14	1n	N6736 C
5	2:59	- 3:05	3:01	N16-17	W10-11	Sn	N6736 C
5	4:57	- 5:01	4:58	N 16	W 12	Sf	N6736 C
6	2:41	- 2:47	2:43	N15-17	W23-26	1n	N6736 D
8	4:24	- 5:25	4:31	N18-21	W45-52	1n	N6736 E
8	23:19	- 24:04	23:39	N16-20	E11-17	1n	----
12	5:24	- 6:02	5:28	N18-21	W28-34	1b	N6743 C
23	6:54	- 7:04	6:57	S26-28	W 90	1n	----
26	0:20	- 0:28	0:22	S20-22	E16-19	1n	S6542 C
26	5:28	- 5:36	5:31	S18-20	E42-44	1n	S6544 F
28	0:04	- 0:09	0:06	N 18	E 34	Sn	N6748 C
28	4:56	- (7:10)	6:02	N15-26	E39-60	3b	N6749 D

PROMINENCE (Dec. 1998)

Date	Time	N		S		Total	Rem.
		E	W	E	W		
1	2h09m	1	2	4	2	9	
2	3:01	3	2	5	3	13	
3		-	-	-	-	-	
4	3:50	4	3	4	3	14	
5		-	-	-	-	-	
6		-	-	-	-	-	
7		-	-	-	-	-	
8		-	-	-	-	-	
9	3:33	4	6	3	1	14	
10	3:19	7	4	5	3	19	
11	2:34	2	2	2	2	8	*
12	2:56	4	4	3	2	13	
13	2:44	4	2	1	1	8	
14	2:05	3	3	1	5	12	
15	3:43	4	1	2	5	12	
16	3:25	2	3	2	4	11	
17	2:46	2	6	5	3	16	
18	2:11	3	10	4	3	20	
19	2:14	0	5	1	1	7	
20	3:29	5	0	1	2	8	
21	2:31	5	1	3	3	12	
22	2:38	4	3	4	5	16	
23	2:58	6	3	3	2	14	
24	2:34	4	2	4	1	11	
25	1:33	3	2	3	4	12	
26	2:16	2	4	4	4	14	
27	2:09	1	6	1	2	10	
28	2:54	1	6	3	5	15	
29	2:47	0	3	5	3	11	
30	3:46	1	3	4	3	11	
31		-	-	-	-	-	
Sum		75	86	77	72	310	
Mean		6.44	5.96	6.44	5.96	12.40	

Days 25 * - Contrast is bad

8cm Prominencescope
H-alpha (H.W 0.7A)

PRINCIPAL PROMINENCE (Dec. 1998)

Date	Time	Type	Latitude	Altitude
U. T.	1 - 6			(ten thousand Km)
2	3h01m	4	S36-37E	5.6
4	3:50	2	N 7-10E	8.1
4	3:50	2	N29-32E	10.0
9	3:33	5	N31-39E	5.6
9	3:33	6	N 6- 8W	5.5
10	3:19	2	N33-37E	6.5
11	2:34	2	N35-38E	6.4
12	2:56	4	N40-41E	6.5
15	3:43	5	S56-59W	5.9
16	3:25	5	N49-55W	5.2
16	3:25	2	S56-60W	8.2
17	2:46	5	N47-56W	5.8
17	2:46	2	S55-59W	8.4
18	2:11	5	S55-61W	6.6
19	2:14	5	S55-62W	6.5
21	2:31	4	N41-42E	5.8
21	2:31	4	S33-34E	5.0
22	2:38	2	N37-41E	7.4
22	2:38	6	S47-52E	7.0
23	2:58	4	N40-41E	6.5
23	2:58	2	N38-51W	8.5
23	2:58	6	S49-58E	8.4
24	2:34	2	N37-40W	10.3
24	2:34	6	S50-56E	10.2
25	1:33	2	N36-38W	11.0
25	1:33	2	N31-33W	5.1
25	1:33	2	S55-57E	11.1
25	1:33	2	S60-62E	5.7
26	2:16	2	N37-43W	11.3
28	2:54	2	N58-61W	6.5
29	2:47	2	N40-47W	8.4
29	2:47	6	S14-15E	7.0
30	3:46	6	N40-47W	6.1

SOLAR FLARES (H-alpha Patrol, H.W 0.6A)

Date	Time(UT)		Max.	Helio. Position		Imp.	Group NO. and Type
	Beg.	End.		Latitude	Mer. Dist.		
12	23h25m	23h34m	23h28m	S14-17	W17-19	1n	----
14	0:07	0:15	0:11	S17-18	W12-14	1n	S6551 D
17	2:27	2:40	2:28	S15-18	W52-55	1n	S6551 D
18	3:44	3:50	3:46	N18-20	E68-73	1b	N6763 E
19	6:50	6:56	6:52	S 29	W 76	Sb	S6550 E
24	1:11	1:43	1:27	N19-21	E29-32	1n	N6764 D
26	5:58	6:01	5:59	S 22	E 64	Sb	S6557 D
27	3:10	3:15	3:12	N16-18	E37-41	1n	N6768 D
27	23:55	24:20	23:58	N18-20	W21-24	1n	N6764 C
28	5:18	7:04	5:57	N25-29	E20-28	1n	N6768 D
28	5:46	6:06	5:48	N24-27	W25-27	1b	N6766 D
28	6:22	6:41	6:28	S 19	E 32	Sn	S6557 D
28	23:17	24:23	23:26	N26-29	E 7-16	1b	N6768 E
28	23:30	23:46	23:36	N26-28	W38-45	1b	N6766 D
30	5:43	6:18	5:48	N25-28	E 0- 4	1f	N6768 E
31	0:54	1:02	0:56	N23-24	W17-21	1n	N6768 E