

PROMINENCE (Jan. 1991)

Date	Time	N		S		Total	Rem.
		U.	T.	E	W		
1		-	-	-	-	-	
2		-	-	-	-	-	
3	2h11m	1	1	0	5	7	
4	0:21	3	2	0	3	8	
5	2:44	2	4	1	2	9	
6		-	-	-	-	-	
7	1:59	1	2	2	3	8	
8	1:41	2	3	3	5	13	
9	2:03	4	2	3	3	12	
10		-	-	-	-	-	
11	1:37	1	4	4	5	14	
12	2:35	1	3	2	0	6	*
13	1:37	1	3	3	4	11	
14	2:58	2	0	7	6	15	
15	2:09	1	1	8	3	13	
16	2:03	1	3	5	4	13	
17		-	-	-	-	-	
18		-	-	-	-	-	
19	2:22	1	2	3	2	8	
20	2:29	2	1	1	4	8	
21		-	-	-	-	-	
22		-	-	-	-	-	
23	1:53	1	6	2	3	12	
24	3:03	1	7	3	2	13	
25	2:33	2	4	4	4	14	
26	1:31	0	1	2	5	8	
27		-	-	-	-	-	
28	2:31	2	3	3	2	10	
29	2:16	3	2	1	2	8	
30	1:35	1	4	0	4	9	
31	1:27	1	4	3	2	10	
Sum		34	62	60	73		
		96		133		229	
Mean		4.36		6.05		10.41	

Days 22 * - Contrast is bad

8cm Prominencescope
H-alpha 6563A(H.W 4.0A)

PRINCIPAL PROMINENCE (Jan. 1991)

Date	Time	Type	Latitude	Altitude
	U. T.	1 - 6		(ten thousand Km)
5	2h44m	2	N41-43W	6.3
7	1:59	2	N12-19W	5.7
7	1:59	5	S37-50E	6.5
8	1:41	2	N46-49E	6.6
8	1:41	5	S42-53E	7.4
9	2:03	5	S41-46E	6.4
9	2:03	6	S31-36W	5.6
13	1:37	5	S 8-19E	5.0
14	2:58	5	S 3- 9E	5.2
15	2:09	5	S70-73W	5.4
16	2:03	4	N24-25E	6.5
23	1:53	5	N 0- 7W	6.5
24	3:03	5	N 0- 4W	5.8
26	1:31	5	N31-47W	5.8
26	1:31	4	S 56 W	5,6
28	2:31	1	S20-24W	8.4
29	2:16	2	S23-25W	8.3
30	1:35	4	S 59 W	7.4
30	1:35	2	S33-35W	5.7
31	1:27	5	N47-53E	7.4

SOLAR FLARES (H-alpha Patrol, H.W 0.6A)

Date	Time U. T.	Max.	Helio. Position		Imp.	Group NO. and Type
			Latitude	Mer. Dist.		
9	4h12m - 6h58m	4h56m	N 3- 7	E37-40	1f	N5914 C
10	4:46 - 4:54	4:48	N11-13	E56-59	1b	N5913 F
10	5:10 - 5:28	5:14	N18-21	E55-57	1b	N5913 F
10	5:12 - 5:28	5:13	N 18	E 45	Sb	N5913 F
12	5:32 - 5:35	5:33	N 18	E 20	Sn	N5913 F
13	0:45 - 0:52	0:47	S 7	E 39	Sn	S5417 C
13	2:14 - 2:34	2:18	S 6- 8	E38-40	1b	S5417 C
14	2:37 - 2:40	2:38	N 8-11	W 8-10	1n	N5913 F
18	0:19 - 2:47	1:44	S 5- 7	W19-24	1n	S5417 D
18	3:48 - 4:33	4:12	S14-15	W 6-14	1n	S5424 E
19	2:28 - 2:37	2:33	N11-14	W52-55	1b	N5913 G
23	1:27 - 1:39	1:31	S13-15	W76-81	1b	S5424 J
24	3:35 - 3:44	3:40	S15-17	E43-46	1f	S5430 F
25	6:38 - 6:54	6:43	S11-12	E 90	Sb	S5437 A
27	1:29 - 1:45	1:33	S12-13	E26-29	1b	S5433 E
28	1:36 - 3:19	2:02	S 5-11	E1 -W8	2n	S5432 H
31	0:04 - 0:18	0:08	N 4- 5	E42-43	Sn	N5926 C
31	1:58 - 3:26	2:15	S 8-21	W30-39	2n	S5430 H

PROMINENCE (Feb. 1991)

Date	Time	N		S		Total	Rem.
		U.	T.	E	W		
1	1h29m	2	4	2	1	9	
2	1:54	1	5	1	0	7	
3		-	-	-	-	-	
4	1:18	2	3	4	2	11	
5	1:44	2	1	3	4	10	
6		-	-	-	-	-	
7		-	-	-	-	-	
8		-	-	-	-	-	
9	2:13	1	3	1	3	8	
10		-	-	-	-	-	
11		-	-	-	-	-	
12	3:57	1	2	3	2	8	
13		-	-	-	-	-	
14		-	-	-	-	-	
15		-	-	-	-	-	
16		-	-	-	-	-	
17		-	-	-	-	-	
18		-	-	-	-	-	
19		-	-	-	-	-	
20	5:10	1	6	2	4	13	
21		-	-	-	-	-	
22	2:03	3	4	1	7	15	
23	2:10	1	5	2	2	10	
24	2:07	2	1	2	4	9	
25	6:22	2	3	6	3	14	
26	1:11	1	3	6	2	12	
27	3:54	3	4	5	4	16	
28		-	-	-	-	-	
Sum		22	44	38	38		
		66		76		142	
Mean		5.08		5.85		10.92	

Days 13

8cm Prominencescope
H-alpha 6563A(H.W 4.0A)

PRINCIPAL PROMINENCE (Feb. 1991)

Date	Time	Type	Latitude	Altitude
	U. T.	1 - 6		(ten thousand Km)
1	1h29m	6	N47-50E	10.3
1	1:29	2	N10-13W	6.0
2	1:54	6	N49-51E	13.1
2	1:54	6	N 7-11W	7.5
2	1:54	6	N 2- 5W	9.2
4	1:18	2	N22-24W	6.6
4	1:18	3	S 6-13W	7.8
5	1:44	5	S36-40E	5.6
9	2:13	2	N43-45E	7.6
9	2:13	4	S 12 W	7.2
20	5:10	2	N35-49W	16.8
23	2:10	5	N25-32W	5.6
25	6:22	4	S 54 W	5.7

SOLAR FLARES (H-alpha Patrol, H.W 0.6A)

Date	Time U. T.	Max.	Helio. Position		Imp.	Group NO. and Type
			Latitude	Mer. Dist.		
2	2h45m - 2h52m	2h48m	S 9-10	E66-68	Sf	S5441 J
4	1:45 - 1:10	1:55	S13-15	W78-82	1n	S5433 C
27	1:19 - 1:27	1:21	S15-16	W65-67	Sb	S5456 J
27	5:28 - 5:31	5:29	S17-18	W68-70	Sn	S5456 J

PROMINENCE (Mar. 1991)

Date	Time	N		S		Total	Rem.
		U.	T.	E	W		
1		-	-	-	-	-	-
2	1h20m	1	2	6	1	10	
3	1:43	2	1	4	1	8	
4	1:01	1	3	2	4	10	
5	3:41	1	5	1	7	14	
6	4:25	2	5	2	7	16	
7	2:37	3	2	1	7	13	
8		-	-	-	-	-	
9		-	-	-	-	-	
10	3:38	1	4	3	2	10	
11		-	-	-	-	-	
12	2:31	0	1	2	2	5	
13	2:39	3	2	1	3	9	
14	4:22	4	1	3	5	13	
15	1:24	4	1	5	4	14	
16		-	-	-	-	-	
17	0:42	2	1	4	1	8	
18	5:07	2	5	1	3	11	
19	1:59	2	3	1	6	12	
20		-	-	-	-	-	
21		-	-	-	-	-	
22		-	-	-	-	-	
23		-	-	-	-	-	
24		-	-	-	-	-	
25		-	-	-	-	-	
26	4:43	1	1	1	2	5	
27		-	-	-	-	-	
28		-	-	-	-	-	
29	2:22	0	5	2	2	9	
30		-	-	-	-	-	
31		-	-	-	-	-	
Sum		29	42	39	57		
		71		96		167	
Mean		4.44		6.00		10.44	

Days 16

8cm Prominencescope
H-alpha 6563A(H.W 4.0A)

PRINCIPAL PROMINENCE (Mar. 1991)

Date	Time	Type	Latitude	Altitude
	U. T.	1 - 6		(ten thousand Km)
3	1h43m	2	S24-27E	7.7
5	3:41	4	N 42 E	8.4
5	3:41	3	S17-24E	8.4
6	4:25	4	N 47 E	5.3
6	4:25	4	N24-25E	6.6
7	2:37	5	N25-36E	8.3
15	1:24	5	S13-17W	5.6
18	5:07	2	S65-68E	8.4
19	1:59	6	N18-22E	5.8
19	1:59	2	S63-67E	8.3
26	4:43	2	N27-30W	6.7
29	2:22	4	N 9 W	6.4

SOLAR FLARES (H-alpha Patrol, H.W 0.6A)

Date	Time U. T.	Max.	Helio. Position		Imp.	Group NO. and Type
			Latitude	Mer. Dist.		
2	1h27m - 1h35m	1h28m	S15-17	W71-76	1n	S5461 C
2	5:13 - 5:29	5:16	S14-18	W71-86	2n	S5461 C
5	3:07 - 3:14	3:10	S18-19	E 90	Sf	S5476 -
7	7:05 - 7:22	7:10	S20-22	E65-69	1n	S5476 F
12	4:20 - 4:33	4:22	S 9-10	W15-16	Sn	S5475 C
13	0:50 - 1:17	0:53	S21-26	W 9-10	1f	S5476 F
13	2:31 - 2:34	2:32	S25-26	E 3- 4	Sn	S5476 F
13	2:54 - 3:19	2:59	S10-13	E45-47	1b	S5480 H
13	7:31 - 7:40	7:33	S10-11	E45-46	Sn	S5480 H
15	4:04 - 4:11	4:06	S 8- 9	E22-23	Sb	S5480 E
17	1:42 - 2:00	1:49	S21-22	W67-69	Sn	S5476 C
18	1:52 - 2:04	1:55	S24-25	E79-80	Sn	S5490 F
18	23:03 - 23:18	23:08	S 7-12	W34-37	1n	S5480 E
19	1:57 - 2:11	1:58	S 9-12	W32-34	1b	S5480 E
19	23:53 - (24:14)	24:09	S 9-13	E55-59	1b	S5490 F
29	6:44 - 7:09	6:46	S25-32	W54-60	2b	S5490 F

PROMINENCE (Apr. 1991)

Date	Time	N		S		Total	Rem.
		U.	T.	E	W		
1	7h40m	1	2	1	4	8	*
2	4:39	1	4	2	0	7	
3	2:38	1	4	0	4	9	
4	4:13	1	1	1	3	6	
5	4:29	0	3	1	1	5	
6		-	-	-	-	-	
7		-	-	-	-	-	
8		-	-	-	-	-	
9	2:55	1	3	3	2	9	
10		-	-	-	-	-	
11		-	-	-	-	-	
12		-	-	-	-	-	
13		-	-	-	-	-	
14	6:02	1	2	3	3	9	
15	4:41	1	2	1	2	6	
16	5:15	4	2	1	1	8	
17	0:54	4	2	0	3	9	
18		-	-	-	-	-	
19	1:34	1	2	2	2	7	
20	6:39	1	4	2	2	9	
21	2:25	0	5	5	3	13	
22		-	-	-	-	-	
23		-	-	-	-	-	
24		-	-	-	-	-	
25		-	-	-	-	-	
26		-	-	-	-	-	
27		-	-	-	-	-	
28	2:12	1	2	1	6	10	
29		-	-	-	-	-	
30	3:55	0	6	2	4	12	
Sum		18	44	25	40		
			62		65	127	
Mean			4.13		4.33	8.47	

Days 15 * - Contrast is bad

8cm Prominencescope
H-alpha 6563A(H.W 4.0A)

PRINCIPAL PROMINENCE (Apr. 1991)

Date	Time	Type	Latitude	Altitude
	U. T.	1 - 6		(ten thousand Km)
2	4h39m	2	N22-26W	5.6
3	2:38	2	N12-15W	5.6
14	6:02	4	S 1- 2E	8.3
16	5:15	6	N 1- 3E	8.8
17	0:54	2	N25-27E	6.3
21	2:25	4	N27-28W	5.4
21	2:25	2	S32-34E	5.8
28	2:12	4	N 6- 7W	5.7

SOLAR FLARES (H-alpha Patrol, H.W 0.6A)

Date	Time U. T.	Max.	Helio. Position		Imp.	Group NO. and Type
			Latitude	Mer. Dist.		
2	22h59m - 24h47m	23h29m	N11-18	E5 -W6	2b	N5959 D
16	6:02 - 6:13	6:05	N26-30	W34-36	1n	N5970 H
17	1:44 - 1:56	1:47	S 6- 7	E45-46	Sb	S5518 B
30	2:37 - 2:44	2:41	S29-30	W80-82	Sn	S5530 J

PROMINENCE (May 1991)

Date	Time	N		S		Total	Rem.
		U.	T.	E	W		
1		-	-	-	-	-	-
2		-	-	-	-	-	-
3	5h05m	2	2	4	2	10	
4	3:01	2	2	5	3	12	
5	2:40	1	3	3	6	13	
6		-	-	-	-	-	-
7	4:41	0	2	1	7	10	
8		-	-	-	-	-	-
9		-	-	-	-	-	-
10	- 44	2	1	5	5	13	
11	3:40	2	4	5	4	15	
12		-	-	-	-	-	-
13		-	-	-	-	-	-
14	1:55	2	2	1	6	11	
15		-	-	-	-	-	-
16		-	-	-	-	-	-
17	4:57	3	4	5	6	18	
18	2:56	1	5	4	4	14	
19		-	-	-	-	-	-
20		-	-	-	-	-	-
21		-	-	-	-	-	-
22		-	-	-	-	-	-
23	3:27	1	5	0	2	8	
24		-	-	-	-	-	-
25	2:35	4	2	5	3	14	
26		-	-	-	-	-	-
27		-	-	-	-	-	-
28	3:53	2	4	4	8	18	
29		-	-	-	-	-	-
30	2:22	1	7	1	1	10	
31		-	-	-	-	-	-
Sum		23	43	43	57		
		66		100		166	
Mean		5.08		7.69		12.77	

Days 13

8cm Prominencescope
H-alpha 6563A(H.W 4.0A)

PRINCIPAL PROMINENCE (May 1991)

Date	Time	Type	Latitude	Altitude
U. T.	1 - 6			(ten thousand Km)
4	3h01m	5	N29-34E	5.2
7	4:41	6	S22-27E	10.0
7	4:41	1	S 3- 6W	5.6
10	- 44	6	N 7- 9E	5.6
10	- 44	2	S34-38W	6.4
11	3:40	4	N33-34W	5.1
18	2:56	2	N 0- 2W	8.3
18	2:56	2	S14-18W	5.6
25	2:35	5	N24-26E	5.6
25	2:35	2	N41-43E	6.4
25	2:35	6	S21-32W	6.5
28	3:53	2	N13-16E	16.0
28	3:53	5	N44-46W	5.8
28	3:53	5	N36-39W	8.2
28	3:53	2	S49-52W	7.4
30	2:22	5	N48-53W	5.6
30	2:22	5	N42-46W	8.2
30	2:22	6	S18-23E	9.3

SOLAR FLARES (H-alpha Patrol, H.W 0.6A)

Date	Time U. T.	Max.	Helio. Position		Imp.	Group NO and Type
			Latitude	Mer. Dist.		
3	22h32m - 22h59m	22h38m	S12-15	E21-24	1n	S5538 G
18	5:36 - 7:30	6:23	N29-30	W73-75	Sn	N5979 H
27	23:13 - 23:21	23:15	N 4- 7	E57-60	1f	N5997 D
28	1:18 - 1:25	1:21	N 3- 5	E60-64	1n	N5997 D
28	3:32 - 3:41	3:34	N 3- 6	E60-64	1n	N5997 D
28	5:29 - 5:37	5:33	N 5- 9	E59-68	1f	N5997 D
28	6:58 - 7:09	7:00	N 6- 7	E59-60	Sb	N5997 D
28	7:50 - 7:58	7:52	N 6- 7	E59-60	Sb	N5997 D
29	3:00 - 3:09	3:03	N 4- 7	E45-48	1n	N5997 C
29	23:41 - 23:56	23:47	N 4- 7	E32-34	1b	N5997 C
30	7:13 - 7:24	7:17	N 5- 6	E31-32	Sn	N5997 C

PROMINENCE (Jun. 1991)

Date	Time	N		S		Total	Rem.
		E	W	E	W		
1		-	-	-	-	-	
2		-	-	-	-	-	
3		-	-	-	-	-	
4	2h44m	0	3	4	2	9	
5	1:01	2	3	2	3	10	
6	4:29	2	3	2	2	9	
7		-	-	-	-	-	
8		-	-	-	-	-	
9		-	-	-	-	-	
10		-	-	-	-	-	
11		-	-	-	-	-	
12	1:21	3	1	4	2	10	
13		-	-	-	-	-	
14	4:14	1	1	0	3	5	*
15		-	-	-	-	-	
16	2:38	2	3	4	3	12	
17		-	-	-	-	-	
18		-	-	-	-	-	
19		-	-	-	-	-	
20		-	-	-	-	-	
21		-	-	-	-	-	
22		-	-	-	-	-	
23		-	-	-	-	-	
24		-	-	-	-	-	
25		-	-	-	-	-	
26	5:20	2	4	8	2	16	
27	3:38	3	3	4	2	12	
28	6:27	2	1	1	1	5	*
29		-	-	-	-	-	
30	3:15	2	1	6	4	13	
Sum		19	23	35	24	101	
		42		59			
Mean		4.2		5.9		10.1	

Days 10 * - Contrast is bad

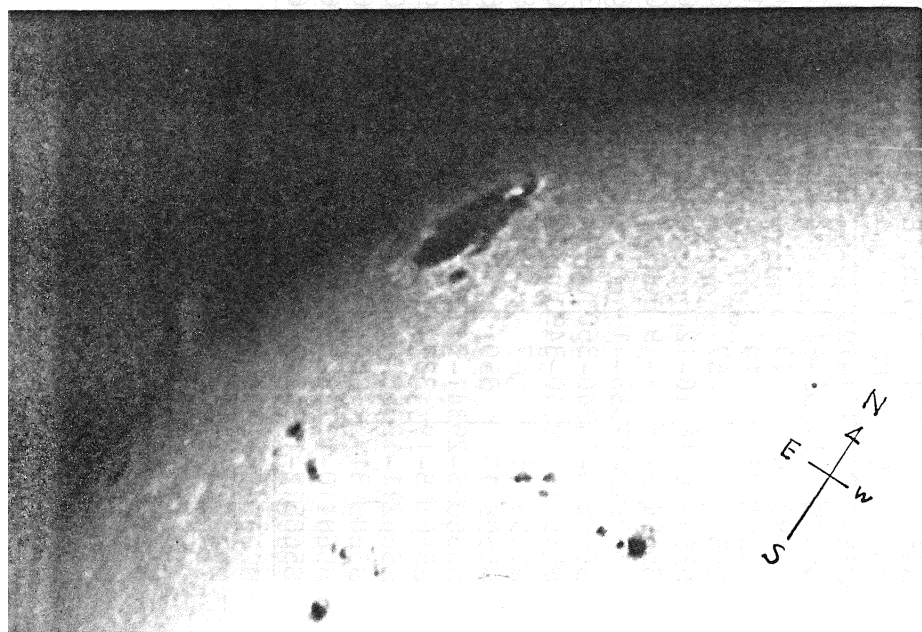
8cm Prominencescope
H-alpha 6563A(H.W 4.0A)

PRINCIPAL PROMINENCE (Jun. 1991)

Date	Time	Type	Latitude	Altitude
	U. T.	1 - 6		(ten thousand Km)
4	2h44m	6	N 2- 3W	5.1
6	4:29	2	N35-37E	5.6
14	4:14	6	N 2- 7W	6.5
16	2:38	3	N35-36W	13.7
27	3:38	6	N13-15E	9.0
28	6:27	6	N10-12E	12.7
30	3:15	2	N25-33E	8.4
30	3:15	4	S72-73W	5.4

SOLAR FLARES (H-alpha Patrol, H.W. 0.6A)

Date	Time U. T.	Max.	Helio. Position		Imp.	Group NO. and Type
			Latitude	Mer. Dist.		
4	3h37m - 5h00m	3h41m	N18-41	E61-70	3b	N6003 H
4	6:14 - 6:24	6:16	S 8-11	W37-39	1n	S5564 C
4	22:26 - 22:33	22:29	N 14	E 40	Sn	N6000 D
5	0:00 - 0:07	0:02	S 8-11	W50-52	1n	S5564 H
5	1:58 - 2:07	2:01	S 17	E 68	Sn	S5572 H
7	0:38 - 3:18	0:57	N13-31	E15-25	2n	N6003 H
9	1:36 - 3:18	1:39	N28-37	E10-W10	3b	N6003 H
11	1:58 - 4:00	2:15	N22-35	W 6-32	4b	N6003 H
11	(21:38) - 24:20	21:49	N20-35	W35-53	2n	N6003 H
13	22:02 - 22:12	22:04	N29-33	W59-65	1n	N6003 H
14	0:15 - 0:51	0:22	N27-29	W61-63	Sn	N6003 H
14	1:31 - 2:38	1:40	N26-32	W60-76	2b	N6003 H
16	5:31 - 5:42	5:35	N 8- 9	E67-69	Sn	N6009 D
18	1:31 - 1:44	1:37	N10-13	W72-76	1n	N6006 D
21	(3:01) - (3:10)	3:03	N13-15	E 0-10	1n	N6009 D
26	1:50 - 2:17	1:56	N 1- 3	E57-64	1n	N6013 J



White light flare

3h45m30s(U.T.)

June 4, 1991

by K.Fujimori

PROMINENCE (Jul. 1991)

Date	Time	N		S		Total	Rem.
		E	W	E	W		
	U. T.						
1		-	-	-	-	-	
2		-	-	-	-	-	
3		-	-	-	-	-	
4	5h35m	1	4	5	8	18	
5		-	-	-	-	-	
6	0:14	3	2	3	2	10	
7		-	-	-	-	-	
8		-	-	-	-	-	
9		-	-	-	-	-	
10		-	-	-	-	-	
11		-	-	-	-	-	
12		-	-	-	-	-	
13		-	-	-	-	-	
14		-	-	-	-	-	
15	6:25	3	2	2	3	10	
16		-	-	-	-	-	
17		-	-	-	-	-	
18		-	-	-	-	-	
19		-	-	-	-	-	
20		-	-	-	-	-	
21		-	-	-	-	-	
22		-	-	-	-	-	
23		-	-	-	-	-	
24	1:34	2	1	2	2	7	
25	4:42	0	1	3	2	6	
26		-	-	-	-	-	
27		-	-	-	-	-	
28		-	-	-	-	-	
29	1:45	2	0	3	6	11	
30		-	-	-	-	-	
31		-	-	-	-	-	
Sum		11	10	18	23		
		21		41		62	
Mean		3.50		6.83		10.33	

Days 6

8cm Prominencescope
H-alpha 6563A(H.W 4.0A)

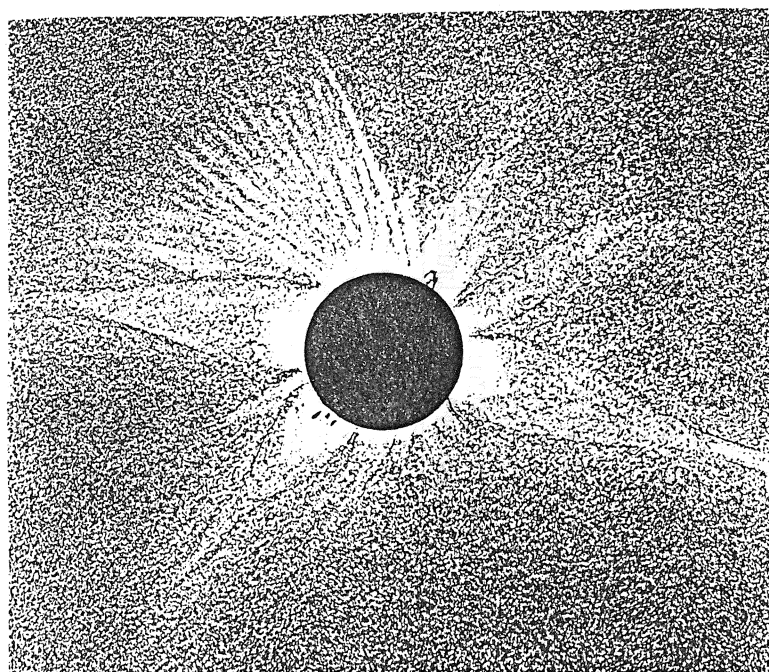
PRINCIPAL PROMINENCE (Jul. 1991)

Date	Time U. T.	Type 1 - 6	Latitude	Altitude (ten thousand Km)
5	5h35m	5	N25-33W	5.6
5	5:35	5	S44-48W	6.3
6	0:14	5	N26-32W	5.0
6	0:14	5	S42-48W	5.7
15	6:25	5	S35-39W	5.6
19	2:24	4	S30-31E	10.0
24	1:34	6	N13-14E	9.3
24	1:34	5	S12-20W	6.5
25	4:42	5	N16-30W	5.0
25	4:42	6	S13-20W	8.3
29	1:45	5	S69-74E	6.3
29	1:45	5	S27-32W	5.4

SOLAR FLARES (H-alpha Patrol, H.W 0.6A)

Date	Time U. T.	Max.	Helio. Position		Imp.	Group NO. and Type
			Latitude	Mer. Dist.		
22	22h11m - 22h20m	22h14m	N 5-10	E37-40	1n	N6029 H
24	6:18 - 6:36	6:23	S10-12	W 0- 3	1b	S5616 E
29	1:48 - 1:55	1:50	N14-15	W44-45	Sn	N6029 H
31	0:47 - 1:30	0:50	S15-20	E 7-13	1b	S5626 D
31	22:52 - 23:22	23:02	N22-26	E23-29	1n	N6035 E

Solar corona seen on July 11, 1991, at La Paz, Mexico
sketch by K. Fujimori



PROMINENCE (Aug. 1991)

Date	Time	N		S		Total	Rem.
		U.	T.	E	W		
1	1h09m	1	3	1	2	7	
2	3:32	2	1	3	2	8	
3		-	-	-	-	-	
4		-	-	-	-	-	
5		-	-	-	-	-	
6		-	-	-	-	-	
7		-	-	-	-	-	
8	5:50	2	3	6	1	12	
9	3:56	4	3	2	1	10	
10		-	-	-	-	-	
11	0:00	2	3	6	3	14	
12	6:55	1	2	5	4	12	
13	3:17	4	4	5	4	17	
14	2:55	1	3	6	4	14	
15	2:17	4	2	5	4	15	
16	2:04	4	1	5	3	13	
17	1:41	2	1	4	4	11	
18	5:31	2	2	7	11	22	
19	1:38	2	2	6	2	12	
20		-	-	-	-	-	
21	2:29	2	3	5	5	15	
22		-	-	-	-	-	
23	4:37	3	1	3	5	12	
24		-	-	-	-	-	
25	6:58	3	1	1	4	9	
26	1:33	2	1	4	4	11	
27	2:24	3	2	3	6	14	
28	1:24	2	3	3	2	10	
29		-	-	-	-	-	
30		-	-	-	-	-	
31		-	-	-	-	-	
Sum		46	41	80	71		
		87		151		238	
Mean		4.58		7.95		12.53	

Days 19

8cm Prominencescope
H-alpha 6563A(H.W 4.0A)

PRINCIPAL PROMINENCE (Aug. 1991)

Date	Time	Type	Latitude	Altitude
	U. T.	1 - 6		(ten thousand Km)
11	0h00m	5	N14-22E	5.1
11	0:00	2	S27-29W	5.6
14	2:55	4	N72-73E	5.1
15	2:17	3	S11-12E	5.6
16	2:04	2	N45-58E	12.1
16	2:04	2	S14-16E	9.3
18	5:31	5	N17-20E	5.6
18	5:31	5	N25-28W	5.6
21	2:29	5	S22-33W	7.4
23	4:37	4	N23-24E	8.4
23	4:37	4	S 25 E	10.2
23	4:37	6	S36-42E	9.0
23	4:37	5	S48-53E	5.5
23	4:37	5	S80-83W	5.5
23	4:37	2	S15-19W	8.2
25	6:58	5	N 7-10W	5.5
25	6:58	2	S43-45W	8.3
25	6:58	2	S30-33W	10.4
27	2:24	4	S37-38E	5.4
28	1:24	5	S38-41E	5.5

SOLAR FLARES (H-alpha Patrol, H.W 0.6A)

Date	Time U. T.	Max.	Helio. Position		Imp.	Group NO. and Type
			Latitude	Mer. Dist.		
2	3h09m - 3h36m	3h20m	N23-28	E 9-19	2b	N6035 E
8	4:02 - 4:11	4:07	N25-27	W62-66	1b	N6035 F
8	6:20 - 6:27	6:24	N18-23	W63-75	2f	N6035 F
8	(8:56)-(9:01)	8:58	N23-25	W62-67	1b	N6035 F
17	1:45 - 1:53	1:48	S12-14	E42-46	1f	S5643 E
17	23:37 - 24:02	23:46	S17-21	E43-50	1n	S5646 D
19	5:32 - 6:31	5:37	N 1- 9	W56-60	2b	N6045 -

PROMINENCE (Sep. 1991)

Date	Time	N		S		Total	Rem.
		E	W	E	W		
1		-	-	-	-	-	
2	3h52m	1	3	4	4	12	
3		-	-	-	-	-	
4	4:42	2	2	5	3	12	
5	4:16	2	6	2	2	12	
6	3:51	2	3	4	5	14	
7	5:02	2	1	2	3	8	
8		-	-	-	-	-	
9	7:21	2	3	7	7	19	
10	2:44	3	4	4	5	16	
11	1:45	4	1	3	2	10	
12	4:14	2	3	4	3	12	
13		-	-	-	-	-	
14		-	-	-	-	-	
15		-	-	-	-	-	
16		-	-	-	-	-	
17	2:15	1	3	5	2	11	
18		-	-	-	-	-	
19	6:36	2	2	2	6	12	
20	3:53	1	4	1	3	9	
21		-	-	-	-	-	
22	2:24	2	4	0	3	9	
23	0:08	2	4	5	5	16	
24		-	-	-	-	-	
25		-	-	-	-	-	
26		-	-	-	-	-	
27		-	-	-	-	-	
28	3:53	2	2	5	2	11	
29		-	-	-	-	-	
30		-	-	-	-	-	
Sum		30	45	53	55		
		75		108		183	
Mean		5.00		7.20		12.20	

Days 15

8cm Prominencescope
H-alpha 6563A(H.W 4.0A)

PRINCIPAL PROMINENCE (Sep. 1991)

Date	Time	Type	Latitude	Altitude
	U. T.	1 - 6		(ten thousand Km)
2	3h52m	5	S39-48E	5.1
2	3:52	2	S49-52E	7.2
2	3:52	6	S26-33W	5.7
4	4:42	2	N16-18W	6.4
4	4:42	5	S13-20E	6.5
4	4:42	2	S73-75E	5.8
5	4:16	5	N20-25W	5.4
5	4:16	4	S75-76E	6.3
6	3:51	2	N 2- 5E	5.5
7	5:02	2	N 9-12E	6.9
9	7:21	6	S 5- 7E	7.3
10	2:44	4	N 5- 6E	5.2
10	2:44	5	S 0- 2E	5.6
10	2:44	3	S 20 W	6.3
11	1:45	2	N 0- 2E	10.2
11	1:45	4	S 5- 6W	6.6
17	2:15	2	N22-24E	6.0
17	2:15	6	S 2- 4E	6.6
17	2:15	5	S31-51E	7.2
19	6:36	5	S69-74E	5.6
20	3:53	5	N10-16W	6.5
22	2:24	4	S 7 W	6.0
23	0:08	6	S14-17E	7.4

SOLAR FLARES (H-alpha Patrol, H.W 0.6A)

Date	Time U. T.	Max.	Helio. Position		Imp.	Group NO. and Type
			Latitude	Mer. Dist.		
5	1h00m - 1h33m	1h11m	N11-15	W65-71	1b	N6058 D
5	5:24 - 5:41	5:28	N23-24	W67-69	Sb	N6058 D
7	7:46 - (8:05)	7:51	S 8-11	W40-43	1b	S5662 D

PROMINENCE (Oct. 1991)

Date	Time	N		S		Total	Rem.
		U.	T.	E	W		
1		-	-	-	-	-	-
2	2h23m	2	3	1	3	9	
3	5:30	4	3	0	3	10	
4	3:37	5	3	1	1	10	
5		-	-	-	-	-	
6		-	-	-	-	-	
7		-	-	-	-	-	
8		-	-	-	-	-	
9		-	-	-	-	-	
10		-	-	-	-	-	
11		-	-	-	-	-	
12		-	-	-	-	-	
13		-	-	-	-	-	
14		-	-	-	-	-	
15	4:19	1	2	1	5	9	
16		-	-	-	-	-	
17		-	-	-	-	-	
18	2:16	2	3	1	5	11	
19	4:27	4	3	2	4	13	
20	3:06	2	2	2	4	10	
21	3:44	3	4	4	3	14	
22		-	-	-	-	-	
23	3:41	2	3	3	5	13	
24	3:07	1	4	3	1	9	
25	5:52	1	5	4	5	15	
26		-	-	-	-	-	
27		-	-	-	-	-	
28		-	-	-	-	-	
29		-	-	-	-	-	
30		-	-	-	-	-	
31		-	-	-	-	-	
Sum		27	35	22	39		
		62		61		123	
Mean		5.64		5.55		11.18	

Days 11

8cm Prominencescope
H-alpha 6563A(H.W 4.0A)

PRINCIPAL PROMINENCE (Oct. 1991)

Date	Time	Type	Latitude	Altitude
	U. T.	1 - 6		(ten thousand Km)
3	5h30m	5	N 2- 7E	5.2
18	2:16	4	N 33 W	7.3
19	4:27	2	S31-38W	6.5
19	4:27	6	S23-28W	5.0
20	3:06	2	S14-16E	5.5
21	3:44	6	N15-23W	6.3
23	3:41	6	N21-26W	8.0
23	3:41	5	S38-42E	5.7
24	3:07	2	S41-45E	13.9
25	5:52	2	N34-36W	5.1
25	5:52	2	S 1- 5W	7.5

SOLAR FLARES (H-alpha Patrol, H.W 0.6A)

Date	Time U. T.	Max.	Helio. Position		Imp.	Group NO. and Type
			Latitude	Mer. Dist.		
1	22h35m - 22h54m	22h48m	S12-15	W 0- 5	1n	S5682 F
2	1:24 - 1:27	1:25	S20-21	E 4- 5	Sb	S5683 E
2	5:38 - 5:42	5:40	S13-14	W 0- 1	Sn	S5682 F
2	6:57 - 7:05	7:00	N16-18	E21-24	1f	N6077 E
3	1:41 - 1:48	1:43	S17-20	W18-20	1b	S5683 E
3	6:04 - 6:10	6:05	N 8- 9	E28-29	Sb	N6079 D
3	6:09 - 6:14	6:11	N14-15	E 8- 9	Sf	N6077 E
4	1:03 - 1:05	1:04	S19-20	W30-31	Sn	S5683 E
15	1:42 - 1:52	1:45	S20-21	E21-22	Sn	S5693 E
15	6:12 - 6:30	6:14	S22-26	W 9-11	1n	S5692 H
15	6:14 - 6:21	6:17	S 20	E 22	Sf	S5693 E
15	7:00 - 7:39	7:03	S21-23	E27-31	1b	S5693 E
18	1:13 - 1:25	1:15	S23-26	W43-46	1n	S5692 H
24	0:42 - 1:13	0:50	S 17	E 56	Sb	S5701 H
24	2:37 - 3:08	2:38	S15-18	E55-60	1b	S5701 H

PROMINENCE (Nov. 1991)

Date	Time	N		S		Total	Rem.
		E	W	E	W		
1		-	-	-	-	-	
2	1h52m	2	5	3	4	14	
3	4:58	1	1	1	1	4	*
4		-	-	-	-	-	
5	3:32	1	4	3	4	12	
6		-	-	-	-	-	
7		-	-	-	-	-	
8		-	-	-	-	-	
9		-	-	-	-	-	
10		-	-	-	-	-	
11	5:17	2	2	4	5	13	
12	6:17	3	0	4	6	13	
13	4:11	3	3	4	5	15	
14		-	-	-	-	-	
15		-	-	-	-	-	
16	2:31	4	1	0	5	10	
17		-	-	-	-	-	
18	- 23	1	2	3	7	13	
19	1:36	1	1	4	3	9	
20	5:15	3	3	3	2	11	
21	1:41	0	3	4	3	10	
22	2:31	2	3	3	1	9	
23		-	-	-	-	-	
24	3:13	1	1	2	2	6	
25	4:10	2	3	3	3	11	
26		-	-	-	-	-	
27		-	-	-	-	-	
28		-	-	-	-	-	
29		-	-	-	-	-	
30		-	-	-	-	-	
Sum		26	32	41	51		
		58		92		150	
Mean		4.14		6.57		10.71	

Days 14 * - Contrast is bad

8cm Prominencescope
H-alpha 6563A(H.W 4.0A)

PRINCIPAL PROMINENCE (Nov. 1991)

Date	Time U. T.	Type 1 - 6	Latitude	Altitude (ten thousand Km)
2	1h52m	2	N40-47E	7.6
3	4:58	2	N41-44E	6.6
3	4:58	5	N34-37W	5.6
5	3:32	1	N23-30W	5.6
5	3:32	2	S 7-10W	6.7
13	4:11	5	N37-43E	5.7
13	4:11	4	S77-78W	5.5
16	2:31	5	S72-79W	6.5
16	2:31	4	S 3 W	6.5
18	- 23	5	N35-42E	6.1
18	- 23	6	S34-38W	10.2
18	- 23	6	S 5- 9W	5.6
19	1:36	5	N34-37E	6.5
19	1:36	6	S 1- 6W	7.4

SOLAR FLARES (H-alpha Patrol, H.W 0.6A)

Date	Time U. T.	Max.	Helio. Position		Imp.	Group NO. and Type
			Latitude	Mer. Dist.		
2	4h03m - 4h12m	4h04m	N 13	W 44	Sf	N6091 E
2	6:44 - (6:56)	6:48	S11-12	W53-62	1n	S5701 F
12	2:33 - 2:44	2:38	N 8-10	E10-12	1b	N6100 D
13	4:13 - 4:40	4:21	N19-21	W43-48	1f	N6097 D
15	(22:47)- 23:07	22:53	S11-15	W18-21	1b	S5716 E
16	4:54 - 5:17	5:02	S14-16	W14-15	Sn	S5716 E
19	2:09 - 2:17	2:12	S 11	E 60	Sn	S5721 D
20	0:55 - 2:06	1:11	S 9-14	E44-58	2n	S5721 D

PROMINENCE (Dec. 1991)

Date	Time	N		S		Total	Rem.
		U.	T.	E	W		
1		-	-	-	-	-	
2	1h51m	5	1	7	4	17	
3		-	-	-	-	-	
4	4:03	3	3	6	2	14	
5	4:53	4	1	3	6	14	
6	4:18	2	1	4	5	12	
7	4:30	0	2	5	1	8	
8		-	-	-	-	-	
9		-	-	-	-	-	
10		-	-	-	-	-	
11		-	-	-	-	-	
12		-	-	-	-	-	
13	3:59	1	0	1	3	5	
14	4:05	1	1	4	6	12	
15		-	-	-	-	-	
16	2:09	1	2	2	5	10	
17	2:55	2	2	2	5	11	
18		-	-	-	-	-	
19	3:58	1	3	5	4	13	
20	3:59	1	4	2	3	10	
21	2:32	2	3	4	1	10	
22	2:12	0	2	3	4	9	
23		-	-	-	-	-	
24	2:59	1	0	5	3	9	
25		-	-	-	-	-	
26		-	-	-	-	-	
27		-	-	-	-	-	
28		-	-	-	-	-	
29		-	-	-	-	-	
30	4:08	1	1	2	2	6	*
31	0:32	3	2	4	5	14	
Sum		28	28	59	59		
		56		118		174	
Mean		3.50		7.38		10.88	

Days 16 * - Contrast is bad

8cm Prominencescope
H-alpha 6563A(H.W 4.0A)

PRINCIPAL PROMINENCE (Dec. 1991)

Date	Time	Type	Latitude	Altitude
	U. T.	1 - 6		(ten thousand Km)
4	4h03m	5	N13-21E	5.6
4	4:03	2	N29-32E	5.6
4	4:03	2	N40-42W	6.2
5	4:53	4	N31-32E	6.6
5	4:53	4	N44-45W	5.7
7	4:30	2	S76-78W	6.8
17	2:55	6	S21-22W	11.1
19	3:58	4	N 4- 5W	5.7
22	2:12	3	S16-18E	7.7
30	4:08	6	N50-51W	7.4
31	0:32	4	N43-44E	7.4
31	0:32	4	N 47 W	6.7

SOLAR FLARES (H-alpha Patrol, H.W 0.6A)

Date	Time U. T.	Max.	Helio. Position		Imp.	Group NO. and Type
			Latitude	Mer. Dist.		
5	2h31m - 3h22m	2h45m	N15-20	E45-56	2n	N6108 E
24	2:25 - 2:52	2:33	S15-19	E14-19	1n	S5676 H
24	3:06 - 3:20	3:09	S15-17	E52-61	1b	S5771 F
24	3:15 - 3:34	3:20	N13-14	E41-44	1n	---
31	3:26 - 3:40	3:32	S14-16	W76-79	Sf	S5767 D